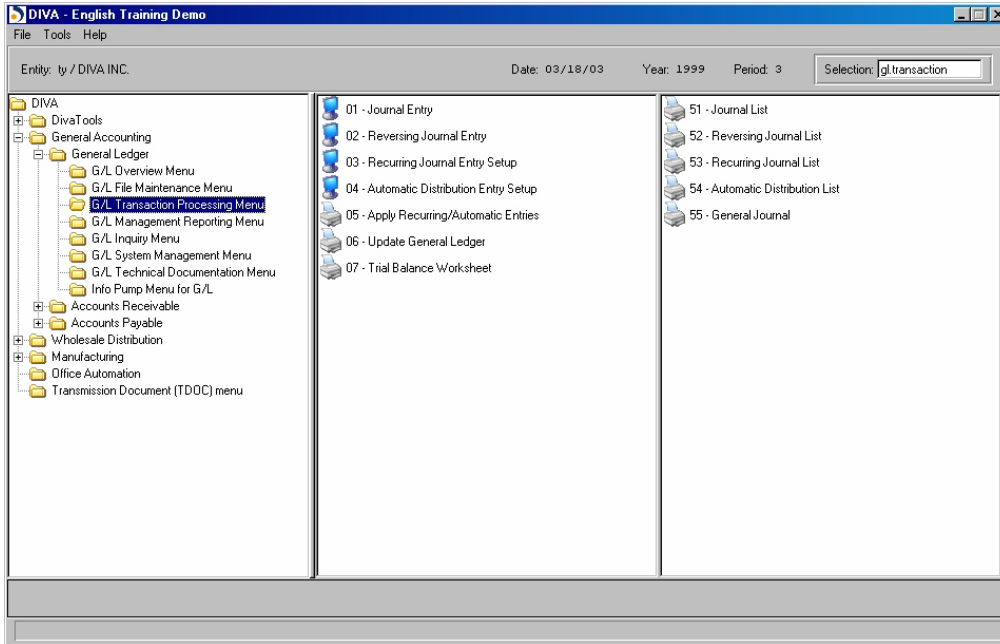


# General Ledger



## Accounting entities

- Represent complex organizations using the relational Entity Concept
- Simplify consolidations and roll-ups among entities

## Reporting

- Flexibly create financial statements across companies, product lines and other entities for any accounting period.
- Define unlimited reporting models
- Ensure accuracy and quality with a built-in statement format checker
- Compare budgeted figures to actual values

## Accounting periods

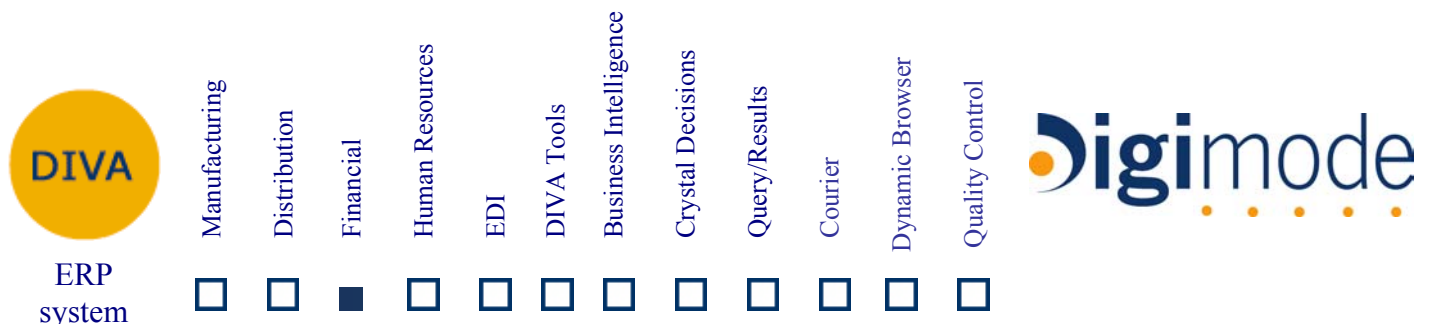
- Post to any open fiscal year
- Automatically calculate opening balances for next period and year
- Use 12 or 13 fiscal periods per year

## Ledger management

- Easily trace transactions to original documents in subsidiary ledgers
- Handle recurring and reversing journal entries
- Retain transaction history details according to your own needs
- Flexibly schedule interfaces from subsidiary ledgers in summary or detail
- Record statistical information (e.g. labor hours) at the account level
- Automatically generate closing entries (which can be edited) to facilitate year-end processing

## Multi-currency handling

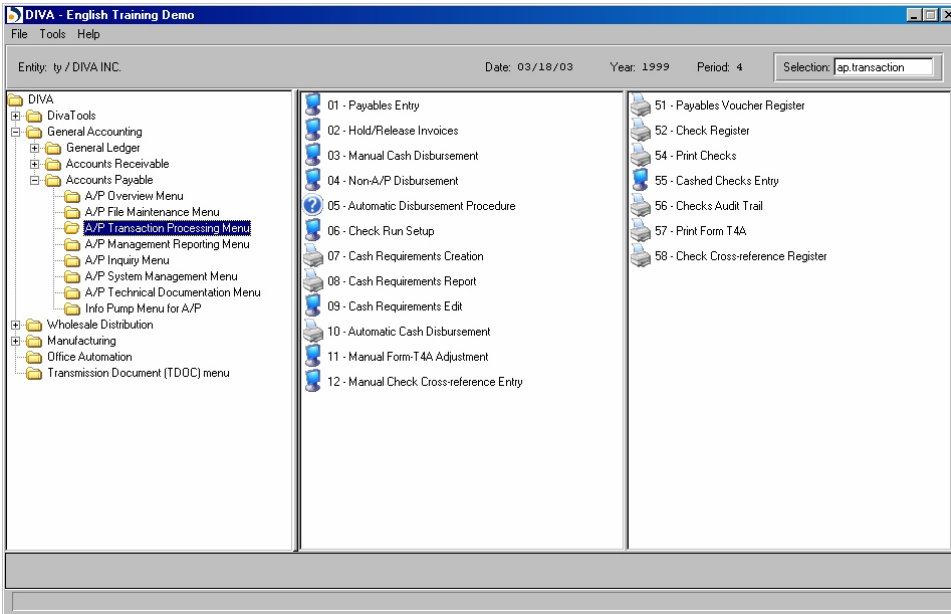
- Different 'home' currencies can be maintained for each controlling company in a multi-company setup
- Exchange rates can be updated daily, or as required, in one central maintenance file. The rates are then accessed by transactions in all other Diva modules
- Exchange rate histories are maintained
- Reports and inquiries display amounts in both the home and foreign currencies
- Consolidate multiple transaction currencies
- Track realized and unrealized foreign exchange gains and losses



# Accounts Payable

## Payables management

- Report cash requirements
- Support multi-company/ multi-division operations with open-ended payment terms, banks and control accounts for each entity
- Maintain multiple Accounts Payable accounts - distinguish trade from non-trade payables
- Predefine vendor-specific expense allocations across multiple accounts and entities
- Set up separate vendors for purchases, payments and statistics
- Handle 'one-time' vendors without having to create a master record.



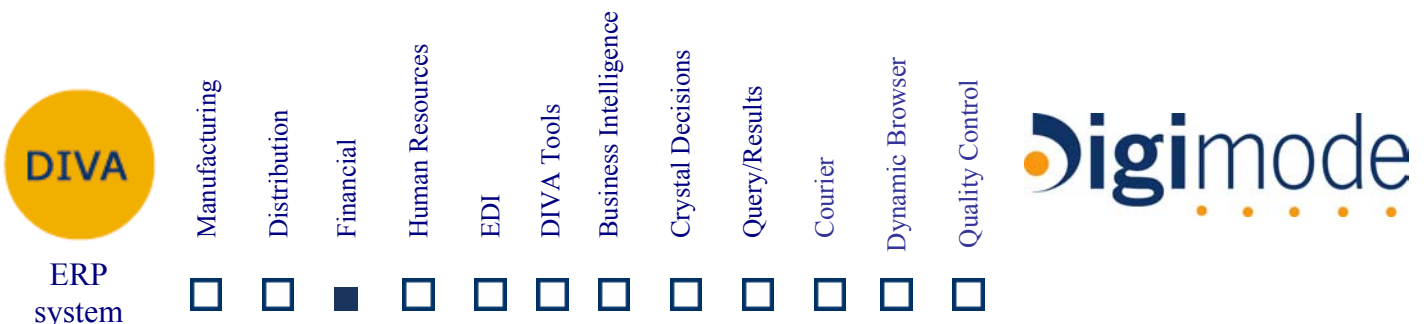
- Maintain detailed transaction history of open and closed invoices for reconciliation
- Purge closed invoices on a user-defined schedule
- Interface in real time with DIVA Purchasing for three-way matching of invoices with purchase orders and receipts
- Manage payables in multiple currencies
- Fully integrate payables with DIVA General Ledger
- Change vendor code and transfer all related history

## Disbursements and checks

- Choose from extensive automatic and manual disbursement, check generation and bank reconciliation procedures
- Manage disbursements locally or centrally
- Print checks online in real time or in user-defined batch mode
- Create convenient expense disbursements (with or without check generation)
- Discount and net payments can be based on the invoice date or the first day of the following month. Predefined payment terms can be overridden at the invoice level

## Vendor analysis

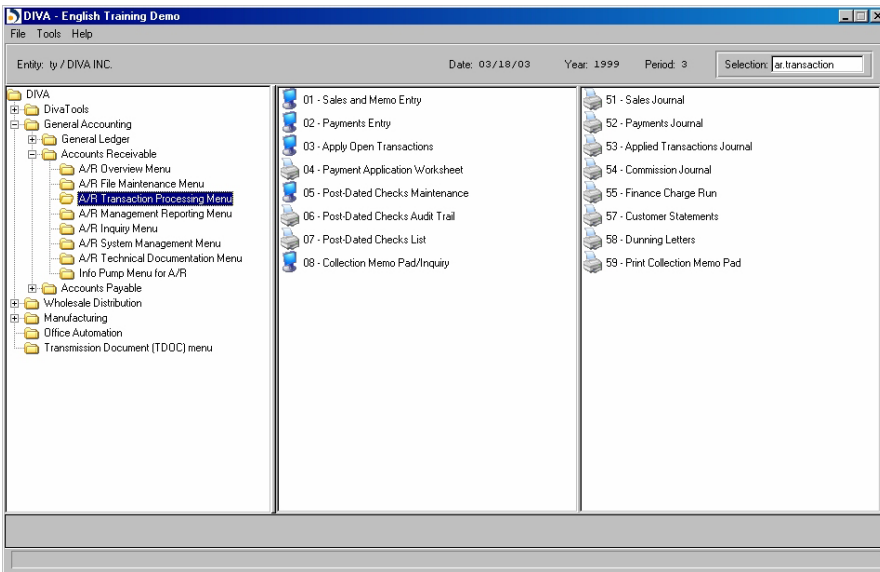
- Track vendor statistics at the buy-from or remit-to level
- Integrate vendor analysis information with DIVA Purchasing



# Accounts Receivable

## Receivables management

- Track receivables in open-item or balance-forward format for each customer
- Manage receivables locally or centrally, regardless of original order or invoice location
- Maintain detailed transaction history of open and closed invoices for reconciliation
- Purge closed transactions on a user-defined schedule
- Fully integrate receivables with DIVA Order Processing and DIVA General Ledger
- Flexibly handle unapplied transactions
- Manage receivables in multiple currencies
- Set up multiple customer addresses for shipping, invoicing, issuing statements and sales analysis



- Send invoices to any customer entity
- Flexibly handle customer 'debit memos' with user defined reference numbers
- Process non-AR transactions
- Process cash sales or 'one-time' customers without having to create a master record
- Create automatic, semi-automatic, manual, credit and unapplied payments
- Change customer code and transfer all related history

## Terms

- Customize terms with multiple dates per payment term
- Calculate discount and net payment amounts from invoice date or the first day of the

following month

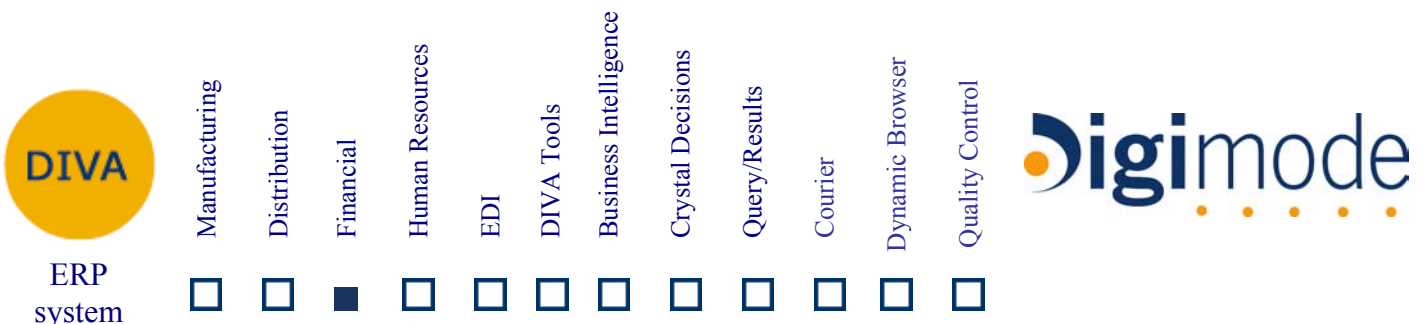
- Manage seasonal invoicing with date-driven payment terms
- Override predefined payment terms at the invoice level
- Manage post-dated checks with reference on customer statements
- Automatically calculate finance charges

## Credit and collections

- Easily modify standard aging categories and statements
- Set enterprise-wide credit limits
- View aging reports online for more effective communication with customers
- Ease collections with dunning letters
- Analyze customer performance by bill-to or ship-to address and by regional or headquarters level

## Sales commissions

- Automatically update the sales commission journal
- Calculate sales commissions as a percentage of sales or profits
- Pay commissions upon cash receipt



# Fixed Assets

## Asset management

- Create and maintain multiple asset ledgers
- Define your own report groupings for asset tracking and valuation
- Value assets automatically or manually
- Fully integrate with DIVA General Ledger for depreciation postings, acquisitions and disposals
- Post transactions to multiple accounting periods
- Report based on any asset type, valuation method or location
- Access reports specially designed for audits and management control
- View any asset information online
- Include memos with asset records

## Depreciation

- Choose from a wide range of built-in depreciation methods or create your own
- Establish book and two tax depreciations for each asset
- Maintain asset ID ledgers for each depreciation class (e.g., book, federal tax and state tax)
- View depreciation calculations prior to posting

## Assets inventory

- Effectively manage assets inventory with interfaces to DIVA Purchasing, Accounts Payable and Inventory Management applications
- Relocate movable assets online in real time
- Track repair activity against assets

